

OOZOO

Rotary Club of  
Mosman Bulletin  
Vol. 59, No.09  
September 1st 2019

## Tuesday 3rd September - Belinda Woolrych - When is the best time to downsize?

Belinda Woolrych has been helping transform homes and lives for over 12 years as a property makeover specialist, helping her clients potentialise their greatest asset.



Her experience in helping those looking to Downsize has led her to write a book and share her knowledge at downsizing seminars Nationwide under the Downsizing Connections banner. Belinda has a magic way of helping people feel more positive about their next move and encourages all attendees to make the most out of their retirement.



## Thursday 5th September - THURSDAY BREAKFAST GROUP

There will be another opportunity for an informal meeting of members on Thursday 5th September. Breakfast is served from 7.30am at Mosman Rowers. All are welcome but especially those members who

find it difficult to attend regular meetings.

### September is EDUCATION & LITERACY Month

Come and visit us at one of our Tuesday lunch meetings.  
12.30 for 12.50pm start at The Upper Duck HOTEL MOSMAN,  
634 Military Rd Mosman (next to Boronia House with parking at  
Bridgepoint).

## Our New Members

Unfortunately President Graeme will be away on business in Korea so it will fall to IPP Halyna to induct our two new members,

SURINDER JAIN is a long term resident of Mosman, returning back recently from voluntary work with Seniors in India. Suri's background has been in IT including helping many not-for-profits with their website needs. This resulted in Suri being nominated Technical Volunteer of The Year 2019 by ConnectUp Australia. Suri's Classification is IT. Suri is keen to participate in community projects and 'anything to do with Climate Change'.



JAMES HUMPHERY (Yes, spelt with an ERY). James was a member of Kenmore Rotary Brisbane from 1988-1990. During that time James held office as Bulletin Editor and Treasurer. He has also been very active within Apex Marion Club in Adelaide from 1980-84 taking on the offices of Secretary, Treasurer and President as well as joining Apex Pennant Hills 1985-86. James Classification is Industrial Chemicals.

## Fund Raising Meeting

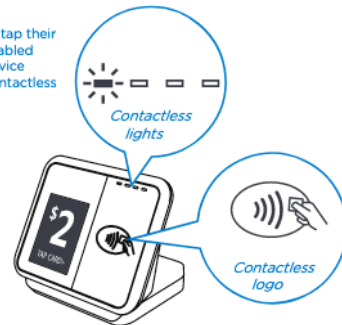
PP Mark had a meeting with various members to discuss fund raising in order to augment our club's Project Fund. Various ideas were discussed including some form of event along the lines of previous fund raisers. It was felt that in view of the effort involved we should only pursue this if we could anticipate significant returns. The possibility of utilising the Arts Centre hall would be explored.



On a smaller scale PP Mark would be revisiting his idea re a moveable donation point. A facility known as "Donation Point Tap" is now available which would permit us to have a point where in addition to coin donations we could accept small PayWave transfers from credit cards. This could also be

extremely useful for our annual Raffle where especially at the Ferry's we found that Tap and Go payments were popular with commuters who didn't have much loose change.

Donors simply tap their contactless enabled card on the device nearest the Contactless logo.



## Annual Raffle

Each year our club runs an annual raffle at Christmas normally aimed at fund raising for a specific cause. The initial preparations for the raffle include:

- seeking out prizes from local businesses
- obtaining council permission to sell in designated places at designated times
- printing the tickets and advertising signs
- drafting a timetable and signing up members to participate

This is a distinct project for 2/3 members to run over the next few months. Please let PP Mark know if you are willing to get involved.

Visit our website: [www.mosmanrotary.org.au](http://www.mosmanrotary.org.au)

## Tales From The Vault - THE ROTARY WHEEL AND LAPEL PIN

Rotary has many pins and each has a unique story. In 1906 a Chicago Rotarian named Montague Bear, an engraver, drew a simple wagon wheel with a few lines to show dust in motion. Paul Harris reasoned this symbolised “civilisation and movement”.

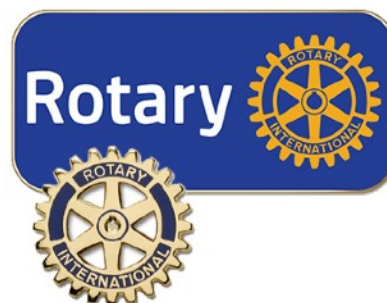
Most of the early clubs had some form of wagon wheel on their publications and letterheads. Finally, in 1922, it was decided that all Rotary clubs should adopt a single design as the exclusive emblem of Rotarians. Thus, in 1923, the present gear



wheel, with 24 cogs and six spokes was adopted by the “Rotary International Association.” A group of engineers advised that the geared wheel was mechanically unsound and would not work without a “keyway” in the center of the gear to attach it to a power shaft. So, in 1923 the keyway was added and the design which we now know was formally adopted as the official Rotary International emblem.

The first Rotary lapel pin was designed by John Frick, a New York Rotary Club member on 14<sup>th</sup> October 1909 with eight spokes, no cogs and no keyway. An eminent New Yorker, he left his house and contents to prosperity and it is well worth a visit at No 1 East 70<sup>th</sup> Street New York by Central Park. As Clubs were formed they adopted the wheel in symbols of their own.

In 1910 Philadelphia, the 19<sup>th</sup> Rotary Club added 19 cogs to create a “working wheel”. Their President who had designed the wheel became the RI President at the 1912 Duluth Convention. By 1918 two Rotarian engineers were critical of the artistic design and “re-engineered it with 24 cogs or teeth and six spokes symbolising the six Objects of Rotary. In 1922 it was declared that “All Rotary Clubs should adopt a single design as the exclusive emblem of Rotarians. In 1923 one change was made, recommended by the President of the Los Angeles Rotary Club, “a keyway” to give “transmission of power”.



**Why wear the Rotary Pin?** Past RI President Bob Barth (1993-94) from Aaru Rotary Club, Switzerland said the pin says this about the wearer. “You can rely on me; I am dependable, I am reliable, I give more than I take, and I am available.”

Visit our website: [www.mosmanrotary.org.au](http://www.mosmanrotary.org.au)

## DATES FOR YOUR DIARY

Tuesday 3rd September - Belinda Woolrych - When is the best time to downsize

Thursday 5th September - Thursday Breakfast Group - Rowers at 7.30am

Tuesday 10th September - Alejandro - new student presentation

Tuesday 17th September - Jeff McMullen - topic to be confirmed

Monday 23rd September - Dinner Date with RIP Mark Maloney

Tuesday 24th September - Andrew Browning - Saving Mothers and Babies in Africa

Thursday 3rd October - Thursday Breakfast Group - Rowers at 7.30am

Tuesday 8th October - Michael Bendon - ANZACs in Greece - Untold Stories

Tuesday 22nd October - Ambre Hammond - An unorthodox life in music

The Rotary Club of Mosman wishes to thank Kennard's Storage Artarmon  
for their generous on-going support in providing storage for our Club

### Front desk roster

**September 2019** Chris Bell and Seymour Major

### Board members

**President:** Graeme Robinson,  
**President Elect:** TBA, **Treasurer:** Derek Andrew,  
**Club Service:** TBA, **Secretary:** Chris Bell,  
**International Service:** Richard Vahtrick, **Youth:** Halyna Koscharsky,  
**Community Service:** TBA, **Vocational:** Barry Starr,  
**Membership:** Di McKenzie, **Fund Raising:** Mark Alderson,  
**Immediate Past President:** Halyna Koscharsky  
**Sergeant at Arms:** Mike Blakeney + Rob Sturrock + Mark Alderson  
**Public Relations:** Clare Stockdale  
**Speaker Coordinator:** Liz Alderson

### Contact:

PO Box 88, Mosman NSW 2088  
[secretary@mosmanrotary.org.au](mailto:secretary@mosmanrotary.org.au)  
M: 0447 791218

Visit our website: [www.mosmanrotary.org.au](http://www.mosmanrotary.org.au)